

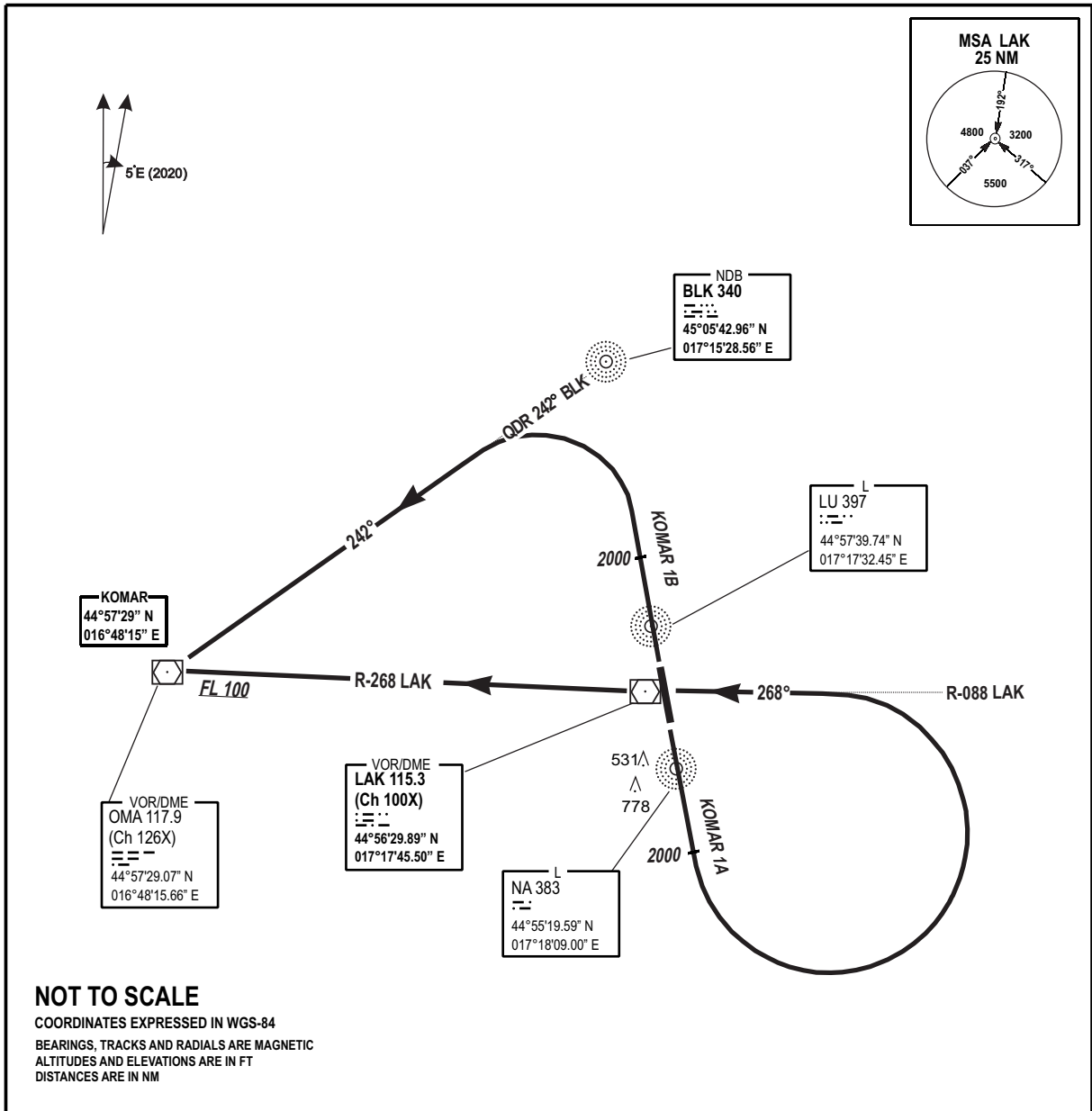
**STANDARD DEPARTURE
CHART INSTRUMENT
(SID) - ICAO**

AD ELEV
401 FT

TRANSITION
ALTITUDE
10 000 FT
VAR 5° E (2020)

TWR/APP 133.075
SPARE 124.175
ATIS 122.625

**BANJA LUKA (LQBK)
KOMAR 1A / KOMAR 1B**



NOT TO SCALE
COORDINATES EXPRESSED IN WGS-84
BEARINGS, TRACKS AND RADIALS ARE MAGNETIC
ALTITUDES AND ELEVATIONS ARE IN FT
DISTANCES ARE IN NM

MNM REQUIRED CLIMB RATE (FPM)								
RWY	%	80	120	150	180	210	250	To
16	8.5%	690	1040	1300	1550	1810	2160	2500
34	5.6%	460	680	860	1030	1200	1420	2500

CHG: LAK VOR/DME COORDINATES;

SID	ROUTEING (Including MNM Noise Routes)
KOMAR 1A (MAG BRG 165°)	Climb on RWY TR to 2000 FT, then turn left to TR 268° to intercept and follow R-088 to LAK. Follow R-268 LAK to cross KOMAR at or above FL 100.
KOMAR 1B (MAG BRG 345°)	Climb on RWY TR to 2000 FT. Then turn left to QDR 242° BLK to cross KOMAR at or above FL 100.

THIS PAGE INTENTIONALLY LEFT BLANK